

Your Guide to Sound View Camp

2017-18 Edition



The Outdoor Ministry for the Presbytery of Olympia

<http://www.soundviewcamp.com>

8515 Key Peninsula Highway South

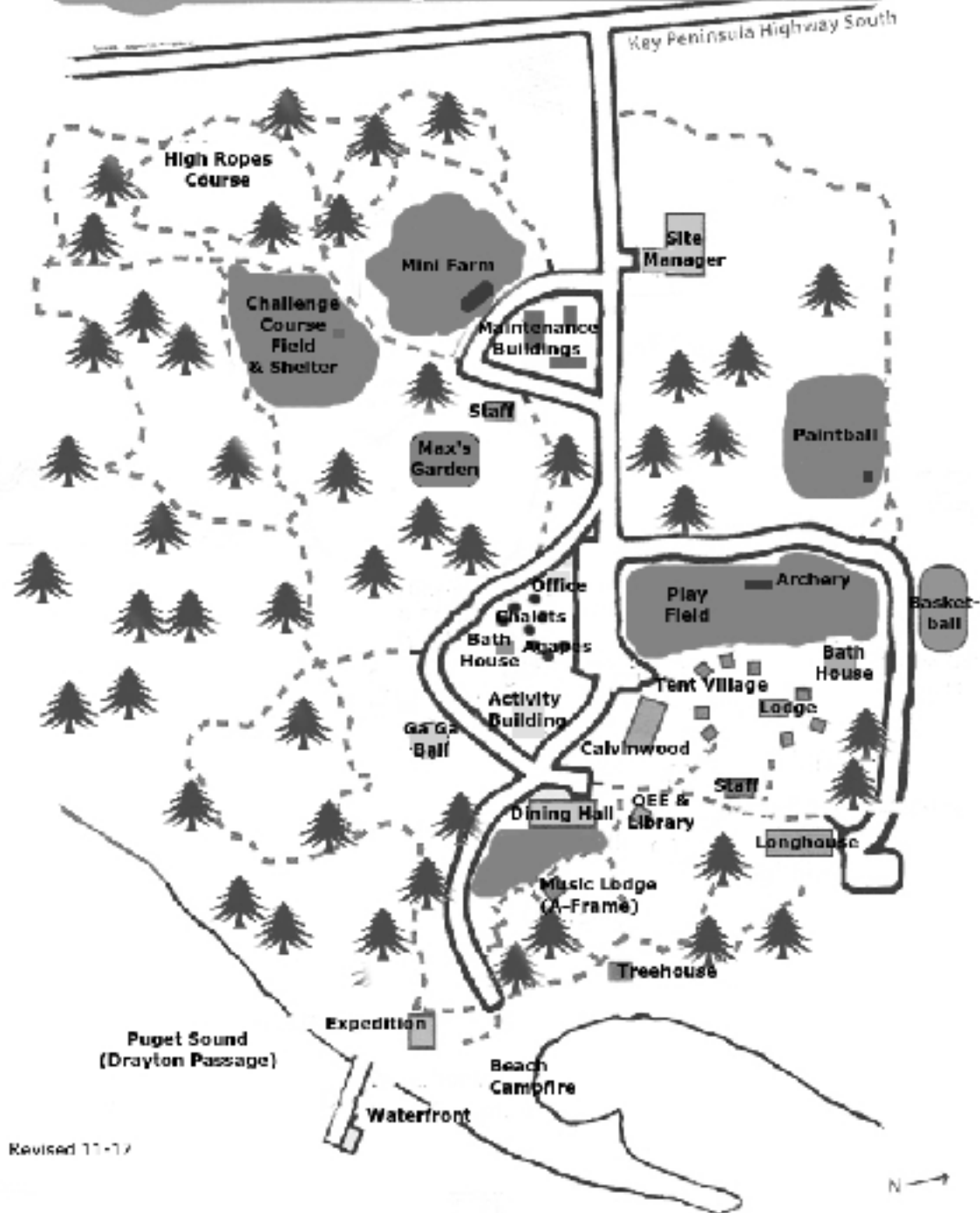
Longbranch, WA 98351

(253) 884-9202 info@soundviewcamp.com



Sound View Camp

Getting around Sound View



Revised 11-17

About this Guide

This Presbytery of Olympia has an amazing camp with woods, fields, and a picturesque sandy beach waterfront on Puget Sound. This guide is for churches considering utilizing the site, facilities, and staff of Sound View Camp for retreats, summer camp, family camp, team building, or a myriad of other reasons to relax, refresh, renew, and recreate.

Sound View, thanks to a wonderful, dedicated board and a creative staff, has significantly improved its facilities. More changes are happening every day to the point that it is hard to keep up. Some of the future improvements are highlighted in this guide, but coming out for a tour would probably be the best way to appreciate all that is new and re-purposed.

Getting away to the serenity of camp brings us closer to Creation, closer to Christ, and definitely closer to each other.

Besides the typical youth and family reasons to come to Sound View, consider these:

- A leadership retreat away from the distractions. (Be prepared to get things done!)
- Choir practice - imagine the potential.
- Sewing and quilting weekend.
- Pastor's retreat. How can our staff help?
- Service weekend. Teach your young people how to work with tools. (We have an awesome camp shop).
- Congregational Olympics. Everyone likes a friendly challenge.
- And, of course, all the good reasons that you can think of.

Please enjoy learning more about Sound View and we hope to be seeing you soon.



Mission



Sound View's mission is to be a place where people learn to put God's Kingdom first. "God's Kingdom First" - *Matthew 6:33*

Core Values

As we interact with children, youth and adults, and as we make decisions regarding staff and facilities we will ensure that we are fulfilling this mission by prayerfully placing a strong emphasis on the following values:

We will love with God's love. We believe that every person is created in God's image and is loved by God. Each person represents a different picture of who God is through his or her unique personality and talents. We will care for people's spiritual and physical needs and show them grace when they stumble.
1 John 4:7-8; 1 Corinthians 12:12-27; Genesis 1:27

We will build people up in Christ. We believe that through Christ every person can be set free to be who he or she truly is. We will encourage, train, and support one another as we become better apprentices to Christ. Throughout the process we will graciously hold one another to God's higher standards.
Ephesians 4:14-15; Proverbs 27:17

We will teach Biblical truths and principles. We believe the Bible to be God's inspired truth. We will use Biblical strategies as we train and teach.
1 Timothy 3:16-17

We will train up Christ-like leaders. We believe that Christ is the perfect example of a servant leader. We will come alongside and train both current and potential leaders using His life as our model.
1 Timothy 2:1-2

We will provide a space for people to meet with God. We believe that God can be found anywhere, but is easier to connect with in places where the distractions of modern life are limited. We will develop our facilities and grounds in ways that encourage us to seek God in a natural setting.
Mark 1:35; Genesis 1:28-30



Leadership



Kurt Sample, Director
director@soundviewcamp.com

Kurt has been involved with resident camping since the 1960s. His home church is in Lakewood, WA at Lakewood Presbyterian but he lives on Anderson Island - which one can see when looking out across the Sound from the waterfront and campfire. So - he often commutes to camp by boat - How cool is this?

When not thoroughly happy taking care of Sound View, you will find Kurt sailing, playing ukulele/banjo/guitar, or coding video games. Kurt has been married to his wife, Lane for over 30 years and both are excited about the bright future of Sound View.

James Goodman, Site Manager
sitemanager@soundviewcamp.com

James (Goody), lives on site with his wife, Angela and three children. His is the first face that our weekend guests groups see. When he is not directly working with the needs of Sound View groups, he maintains the site and cares for the camp "critters".



Natalie Castle, Finance Manager
bkeeper@soundviewcamp.com

Natalie serves as both staff and also on the Sound View Board. She helps the director and site manager do their jobs by taking away the worry of the daily financial tasks. She is the "bargain shopper" and keeps Sound View financially stable by seeking out the good values and finding the best way to achieve even the simplest tasks.

When not at Sound View, Natalie manages her own farm.

Board of Directors

The Sound View Board of Directors oversees the policies and operations of Sound View Camp & Retreat Center. Membership of the Board is open to anyone who supports Sound View's mission regardless of denominational or presbytery affiliation.



Board Members: Pam Anderson (Convener), Natalie Castle, Paul Cranefield,
Jennifer Houston, Brook Carpenter, Bob Zych

Location/Directions

From I-5

- I-5 Head towards Tacoma
- Exit 132, WA-16 West, 13.5 miles
- Exit, Purdy Dr. NW/WA-302W, 1.3 miles
- Left, 302/Gig Harbor-Longbranch Hwy, 5.3 miles
- Straight, Key Peninsula Hwy, 13.5 miles

Get onto I-5 headed towards Hwy 16, exit 132.

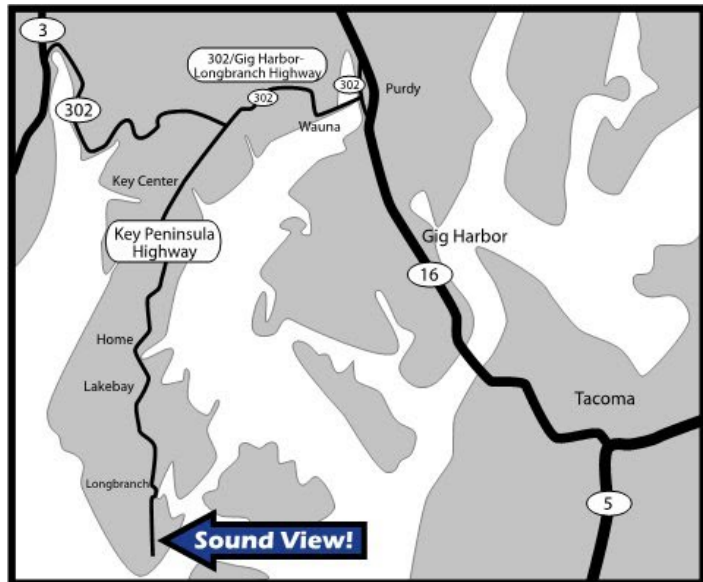
Hwy 16 will take you through Tacoma and across the Narrows Bridge (there is a Toll when returning to Tacoma!)

We are the fifth exit after the bridge. It is not numbered, watch for the sign! Purdy Dr.

NW/WA-302. Signs will also indicate Purdy, Key Center, and Shelton. This exit will wrap you under the freeway and continue to a light where you will turn left on 302/Gig Harbor-Longbranch Hwy.

You will immediately cross a narrow bridge leading onto a long spit of land. After five miles you'll come to another light. 302 heads off to the right, but you'll continue straight onto the Key Peninsula Hwy. From here you just keep coming! You'll go through Key Center, Home, and Longbranch!

When you see a dead-end sign, you're almost there, our driveway and sign are on the left! If you go too far, the road just dead ends, come on back!



Accommodations

Sound View's lodging spaces are suitable for youth and family groups. Although adult groups are frequent visitors at Sound View, we make no pretence that our facilities are geared towards adults. (Maybe someday). We have bunk beds and bunk mattresses which may prove challenging for older adults.

Sound View Camp consists of four lodging areas.

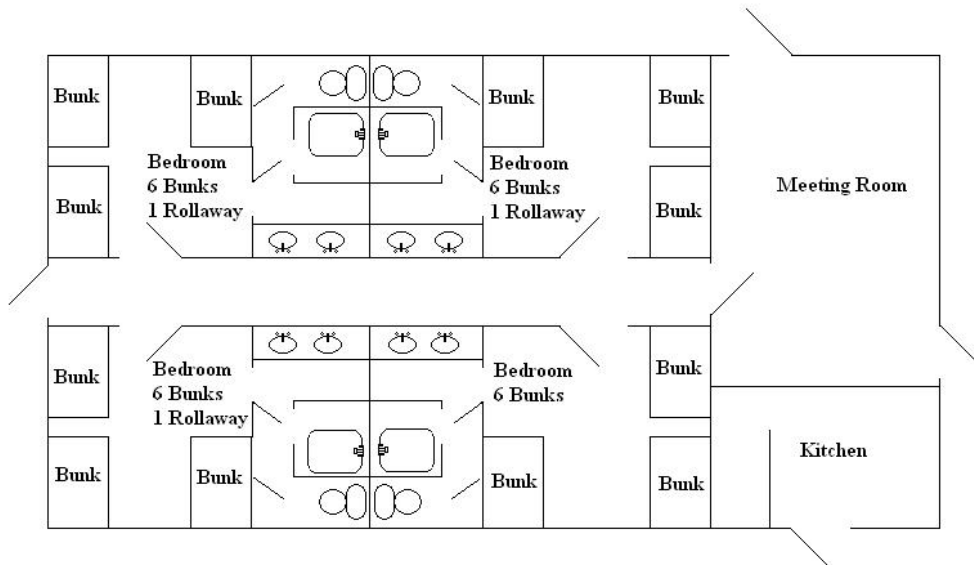


Calvinwood

This stand-alone facility is equipped with a kitchen and separate restrooms for each sleeping area. Calvinwood has a large meeting space, and four rooms that sleep 6 plus four cots for a total of 28 beds.

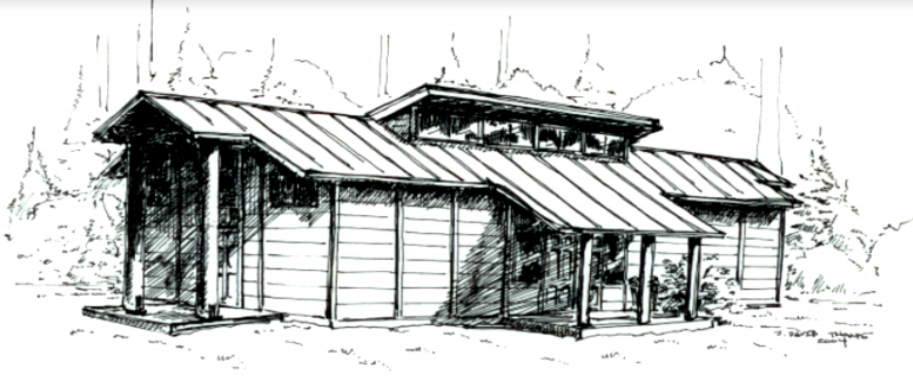
- Big Screen TV
- Central location provides easy access to all of Sound View's attractions.

- Handicapped access parking and bathroom.
- Full kitchen with utensils.
- Comfortable meeting room with couches and fireplace
- Big porch



Calvinwood Floor Plan

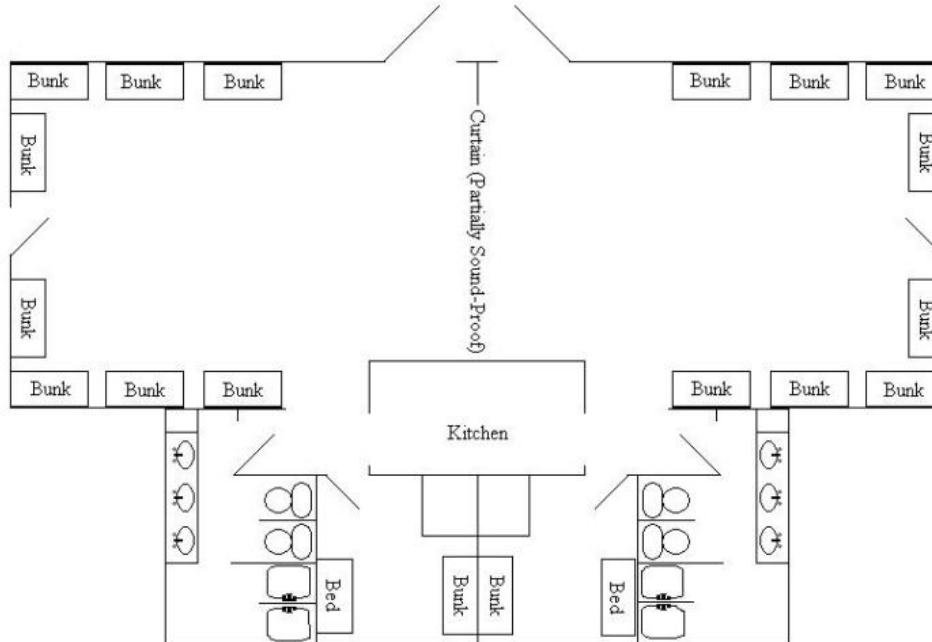
The Longhouse



The Longhouse is an ideal youth group lodge and we offer an affordable youth group package (complete with meals and activities) for those who use this space. It **sleeps up to 36 participants** with 32 bunkhouse beds and two small “leader” rooms that

sleep 2 to 3 each.

- Set apart from the rest of the camp, you are free to make noise, or enjoy peace and quiet.
- Has a small kitchen for serving up snacks.
- A solid, semi-soundproof curtain divides the two sides in half, or can be opened to provide a large meeting area with cozy couches..
- Designed for youth groups: sleep, play games, and enjoy a “campy” lodge.
- Two full bathrooms, one on each side.
- Beautiful trails lead past a secluded picnic shelter, a campfire pit overlooking the Sound, the Tree House, finally ending at Sound View's waterfront!



Longhouse Floor Plan

Chalet Village



This village is a cluster of 8 tiny cabins in a piney wood field. The village consists of three “**Agape**” cabins and five “**Chalet**” cabins. Sometimes we refer to this village as “the Shire” because the buildings would be perfect for hobbits.



The Agape Cabins each sleep three, are heated, and have a half-bath inside.

The Chalet Cabins each sleep 4-5 (3 twin and one full) with no inside bathroom. A restroom and shower house is located in the village.

The Chalet Village can sleep up to 34 people and is perfect for scouts and family groups. An intimate fire circle in the heart of the Village is great for campfires and outdoor cooking.

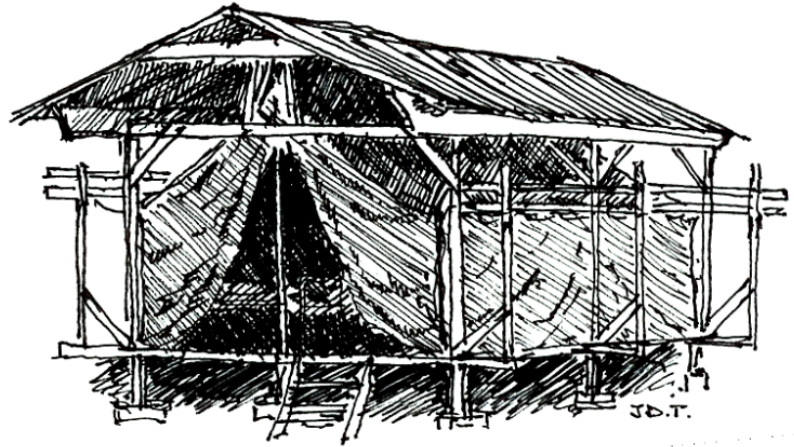
By March of 2018:

- All 5 chalets will be weatherized (new siding, insulation, windows, heat) - thank you to individual churches of the Olympia and Seattle Presbytery.
- A mini-lodge will be renovated out of a platform-tent frame to create a meeting space for Chalet Village residents. This is the result of a donation by Cazadero Performing Arts Family Camp.

Tent-Village

Sound View's tents are unique because they have a real roof over each one. This doesn't make them particularly warm - but one does stay dry.

The tents are available year-round but are the most comfortable from May-October. Next to the tents is a beautiful shower house facility. The tents will easily sleep 8 to 10 participants with 4 bunk beds and two single cots.. These work great as family units, or as traditional camp cabin groups. Eight tents sleep up to 80 participants.



The Tent Village is central in camp with easy access to the lodges, activity fields, and the dining hall. In the center of the village is a support cabin and also a picnic shelter where a creative group could prepare food.

Activity Spaces

Dining Hall

Our carpeted, heated, group-friendly dining hall is located just down the hill from Calvinwood and is an easy walk from all other areas of camp. The lodge can accommodate up to 140 inside on big round tables that seat up to 10 people (perfect for a cabin group of 8 kids and 2 counselors). 20 more people can eat on the covered porch.

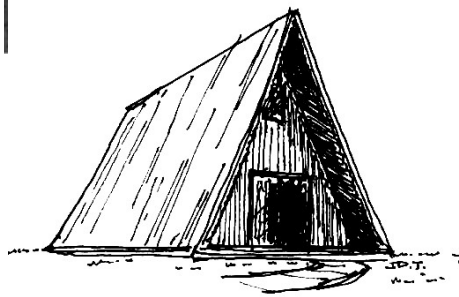


The dining hall is equipped with a fireplace, projector, screen and PA system.



Groups renting the entire camp have the option of cooking for themselves in the dining hall kitchen. Otherwise, our cooks can provide hearty, healthy meals during anytime of the year.

A small wing of the dining hall can sleep 8 people in two rooms, each with two bunk beds.

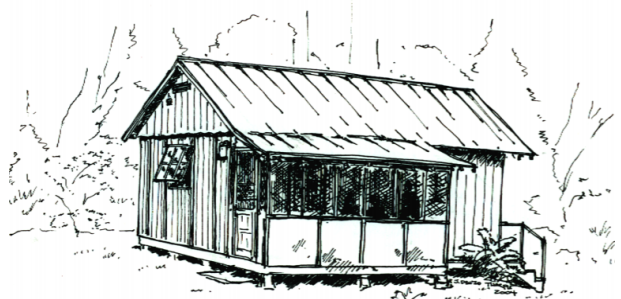


A-Frame

Just down the hill from the dining hall sits the A-Frame. The main floor of this lodge is a meeting space for up to 30 people and houses the camp ukuleles and song boards. Upstairs is



staff housing.



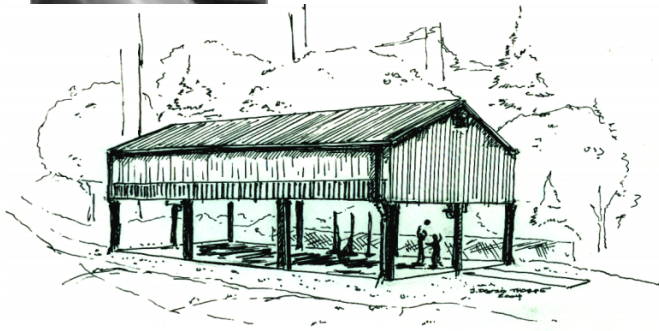
Program Office

This building (Rainier View Cabin) has a meeting/break-out space for up to 12 people. It also is the hub/offices/and storage area for the camp outdoor education program. In the summer, it is used for arts and crafts.



In the nice weather we set up games and craft activities between this building and the dining hall. By summer, a new large deck will be built (expanding the existing porch) as a gathering/program space.

Next to the building is a big toy and gaga ball pit. Easily viewable from the dining hall porch. (A great place for adults to enjoy an after-meal cup of coffee.



Activity Building

This large structure is down the hill from the Chalet Village and up the hill from the dining hall and features a full-sized basketball court but lined also for volleyball and pickleball. It has gym-style lights so it can be used at night. It can be set up with chairs/tables for meetings for up to 200 people.

Next to the Activity Building is a gaga ball pit and spaces for group games.

Mini Farm



The camp mini farm is the home of various animals, mostly rescued or donated. We believe it is important for young people to be given opportunities to learn about and care for some of God's critters.

The camp staff welcome groups who want to help out with morning/evening chores

around the farm as well as donations to keep these animals well cared for.

Presently, the mini farm is home to turkeys, ducks, chicken, sheep, goats and one lovable llama.

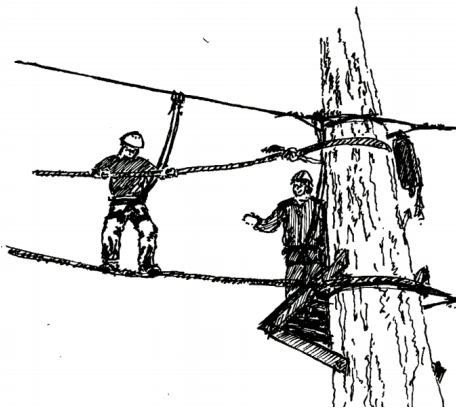


Challenge Course

Our challenge course consists of two areas:

Team Building Initiatives (Low Ropes)

An Initiative is a project or problem where success requires a wide range of the group's mental, physical, and social skills. Initiatives are set up with the belief that each member of your group brings both strengths and weaknesses to the process. Initiatives help develop a strong group cohesiveness by improving communication, developing leadership, and creating a sense of team identity.



High Ropes Course

The High Ropes Course is a series of obstacles such as rope bridges and balance beams suspended twenty-five to thirty-five feet in the air. Each participant wears a climbing harness and helmet and is attached to a belay line, ensuring their safety at all times. The High Ropes Course is much more of an individual growth experience where each participant is going through the obstacles by themselves while your group is encouraging them.

The Course can be used as a way to get individuals to step out and grow or just as a fun afternoon activity.



Waterfront

The waterfront at Sound View is something special. It is situated on a sandbar (almost a navigational hazard) in Drayton Passage on Puget Sound. Because of this, our waterfront is a sandy, gentle slope into the water.

When you add in the extreme tides, the look of our waterfront changes dramatically. Sometimes it is mere “step out” from

the grass into your canoe or kayak; while at other times it is a beachcomber’s paradise with sand dollars, clams, and low-tide fun.

Our main campfire area is located at the waterfront and sets the tone for amazing night-time worship.

Whatever your passion - be sure to bring your camera!



Paintball / Archery

These popular activities are available year-round.



Summertime

For 2018, our own summer camp program will run for three weeks. For the rest of this popular season we will be serving a variety of churches and not-for-profit organizations which choose to use our remarkable facility.

Our camp sessions run from Sunday, 4:00 PM to Saturday, 10:00 AM.



Week 1 (July 15 to 21)

- Youth Camp Session 1. This is the traditional camp program for youth, ages 8 to 14. Our capacity is 64 campers (32 girls, and 32 boys)
- Expedition Session 1. This is a session for middle schoolers who not only experience traditional camp activities, but also prepare for and undertake an overnight canoe trip. Capacity is 16 campers (8 girls, 8 boys).
- Construction Camp. This is a new offering for middle-schoolers who are interested in building a new structure at camp. (We are thinking of a covered shooting shelter at the archery range). When not “constructing”, they will be enjoying camp activities.
- LIT (Leaders in Training) Session 1. This is the first week of a two week leadership development program for teens going into the 10th grade.



Week 2 (July 22 to 28)

- Youth Camp Session 2. This is the traditional camp program for youth, ages 8 to 14. Our capacity is 64 campers (32 girls, and 32 boys)
- Expedition Session 2. This is a session for middle schoolers who not only experience traditional camp activities, but also prepare for and undertake an overnight canoe trip. Capacity is 16 campers (8 girls, 8 boys).
- Mini Camp Session 1. This is an introductory (try camp out) experience for kids ages 7-9. It ends on the Wednesday of that week. The LITs help out with this program, putting their new skills to work.
- LIT (Leaders in Training) Session 2. This is the first week of a two week leadership development program for teens going into the 10th grade.



program, putting their new skills to work.

Week 3 (July 29 to August 4)

- Youth Camp Session 3. This is the traditional camp program for youth, ages 8 to 14. Our capacity is 64 campers (32 girls, and 32 boys)
- Expedition Session 3. This is a session for middle schoolers who not only experience traditional camp activities, but also prepare for and undertake an overnight canoe trip. Capacity is 16 campers (8 girls, 8 boys).
- Mini Camp Session 2. This is an introductory (try camp out) experience for kids ages 7-9. It ends on the Wednesday of that week. The LITs help out with this

***Rates:**

Youth Camp - Ages 8-14 - \$375. (Session runs Sunday - Saturday)
Mini Camp - Ages 6-9 - \$250. (Session runs Sunday - Wednesday)
Expedition - Ages 12-15 - \$375. (Session runs Sunday - Saturday)
Construction Camp - Ages 12-15 - \$300. (Session runs Sunday - Saturday)
LIT - going into 10th grade - \$400. (2-week program runs Sunday - Saturday)
ROVER - going into 11th/12th grade - FREE. (Assist 2 to 4 -weeks)

*** Sound View Camp's summer rates are HALF those of our nearest competitor.**

Camperships/Sponsorships

Camperships are awarded to youth who need a little financial assistance. This is managed by Sound View as part of our fundraising.

Sponsorships are when a church or organization chooses to pay a percentage of the camp fee by setting up a "code" that the family can use at check-out to claim the sponsorship. This is a great way to engage families with kids and a worthy project for your church leadership. **The camp staff can help you set up a sponsorship code.**

Summer Staff

We need your help recruiting summer staff. Please refer potential staff members and volunteers to the website. <http://www.soundviewcamp.com/camp-staff/>

Summer Staff June 24 - August 18, 2018

It takes a talented team of 10 people to run the activities and special events at Sound View for both our own summer programs, family camps, and retreat groups. If you want to be one of those 10, you need to be over 19, preferably a certified lifeguard, and experience with one or more of the following: ropes course, archery, paintball, canoeing, kayaking, group games. You need to be flexible, trustworthy, and have an ability to "go with the flow" as group needs change.

For three of those weeks, you will be working with kids from all walks of life and having the ability to share the good news of Jesus Christ with them. Camp Counselors have a tremendous impact on the kids in their charge and we will spend a good deal of time training you how to use your talents in reaching them.



Waterfront Director June 24 - August 18, 2018

We have an amazing waterfront and need that special lifeguard (over 21) to safely oversee the activities there. Like all camp jobs - you must be creative and flexible.

Summer Kitchen Staff
July 1 - August 18, 2018

A well-fed camper is a happy camper. We employ two cooks and two dishwashers (cook's assistants) to manage the kitchen and serve up some healthy food. Excellent on-the-job training will be provided by professional chefs.

Adult Volunteers (Nurse, Carpenter, Artist, Friend, Cook, etc..)

Aka "Calvinwood Crew"

July 15 - August 4, 2018

We rely on some specialty volunteers for each of our three sessions. The camp nurse sees to the overall health of our campers and staff, the carpenter runs the wood shop, a resident artist paints, crafts, and inspires. What is your passion? Can you make it fit into our camp program? Includes comfortable lodging in Calvinwood Lodge and a free session for one of your kids.

Churches choosing to "adopt" a particular session to send their youth to Sound View, are encouraged to send along a couple "Calvinwood Crew". What a great way for the adults to report back on what the kids are learning!!



Youth Group Retreats

We have a special program and rate for youth groups staying in the Longhouse for a weekend retreat.

At Sound View, we know that you have an agenda when you bring young people to a retreat. We believe that it is our responsibility to **augment** your agenda with activities best done at camp and best led by our staff. We understand very well our crazy Pacific Northwest weather and what it does to scheduled activities. So, we keep an open mind and will work hard to make activities happen based on what we can safely do, what the young people are interested in doing, and what will yield the most value and FUN.

We have excellent choices to offer like canoeing, group initiatives, high ropes, archery, paintball, crafts, hikes, and all sorts of crazy games. We incorporate team building into everything we do. We can change course in an instant because we have learned it is good not to get locked into one thing to end up disappointed when the weather won't cooperate.



A Typical Schedule

FRIDAY

6:00 PM (ish) - Arrival

7:30 - Snacks and group games in the dining hall - Sound View staff

SATURDAY

8:00 - Breakfast. Pancakes and sausage.

8:30 - Mini-Farm Chores (optional)

9:00 - Group Leader takes charge for the morning - your own program

12:30 - Lunch. Soup, sandwiches, chips, brownies.

1:00 - Activities pertinent to the weather led by Sound View staff. Paintball, challenge course, waterfront, etc..

5:00 - Time on your own

6:00 - Dinner. Chicken, rice, veggies, cake

8:00 - Campfire (outside or inside) led by Sound View Staff - (s'mores)

SUNDAY

8:00 - Breakfast. French toast, bacon.

8:30 - Mini-Farm Chores (optional)

9:00 - Group Leader takes charge for the morning - your own program

12:30 - Lunch. Pizza, salad, dessert

1:00 - One Last Special Activity led by Sound View staff

3:00 - Pack up / clean up / depart

LODGING (keeping it campy)

Our youth retreat package is geared towards the Longhouse - which sleeps 36 - 2 rooms of sixteen - 2 rooms of two - heated.

RATES (keeping it affordable)

Staying in the Longhouse (Limit 30 youth and 6 adults) - \$85 per person - includes 2 nights/5 meals and camp staff working to augment your program.



Program Growth

We are updating, scheduling and generally trying out a number of new or updated programs to standardize our calendar. Programs such as:

- Sing 'n Jam Weekend in January, for acoustic music players, singers, and lovers.
- Christmas Cookies and Crafts Saturday in December.
- Family Camps
 - Memorial Day Weekend
 - Mom & Me Camp Out in May
 - Mid-Summer (Totally Affordable Family Fun (YAY) -

TAFFY

- Labor Day Weekend
- New Year's Weekend
- Fundraisers for Camperships
 - March Mud Run and Obstacle Course
 - A boating event fundraiser later in the year
- Middle/High School Retreats for both established youth groups but also welcoming to "single" kids
 - May
 - October
- Spring Break Sports Camps
- Outdoor Environmental Education for schools (Wednesday - Friday)
 - Spring Season - May-June
 - Fall Season - September-October

Master Plan

Sound View is in the middle of the process to develop a strategic master site plan. Thanks to funding from the Presbytery of Olympia, consultants from the planning firm of Fletemeyer & Lee are working to create a template for the future of camp. As this moves forward towards completion in 2018, we will be looking for input from as many people as possible.